

# QUALITY AND COST - UNBEATABLE

**LOTO  
MENA®**

*Making Workplaces Safer...*



WEATHER RESISTANCE



NON CONDUCTIVE



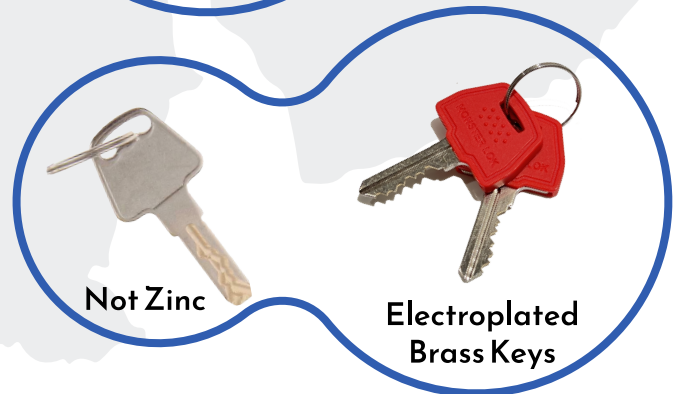
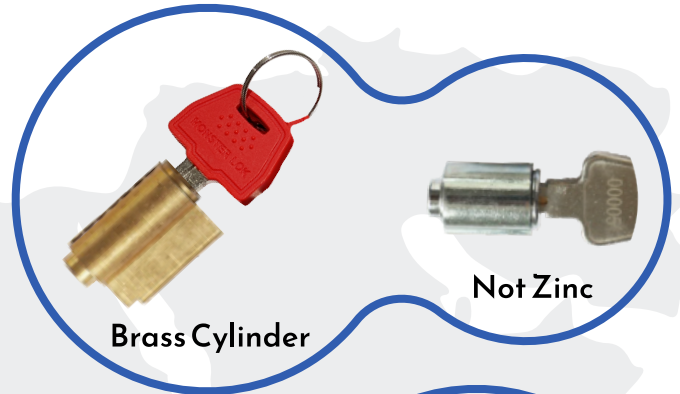
3 POINT TRACIBILITY



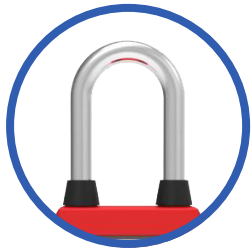
HEAVY DUTY

## PREMIUM FEATURES:

- ◆ WEATHER PROTECTION COVER
- ◆ LASER ENGRAVED SERIAL NUMBERS
- ◆ COLOR CODED 2 KEYS
- ◆ BRASS CYLINDER FOR LONGER LIFE
- ◆ KEY RETAINING FEATURE
- ◆ 6-DIFFERENT SHACKLE TYPES



## 6-DIFFERENT SHACKLE TYPES



*Chrome plated  
Steel Shackle  
6mm  $\varnothing$  x 38mm*



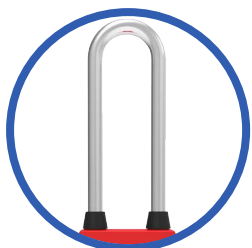
*Stainless Steel  
Shackle  
5mm  $\varnothing$  x 40mm*



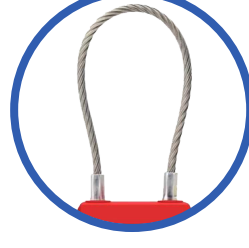
*Non-Conductive  
Nylon Shackle  
6mm  $\varnothing$  x 38mm*



*Non-Conductive  
Nylon Shackle  
5mm  $\varnothing$  x 40mm*



*Chrome plated  
Steel Long Shackle  
6mm  $\varnothing$  x 80mm*



*Stainless Steel  
Cable Shackle  
3.2mm  $\varnothing$*

## MONSTER LOK® Shackle: 6 mm ø



### Chrome plated Steel Shackle

- MLS638R   ■ MLS638B
- MLS638Y   ■ MLS638N
- MLS638G

### Non-Conductive Nylon Shackle

- MLN638R   ■ MLN638B
- MLN638Y   ■ MLN638N
- MLN638G

## LOTO LOCK® Shackle: 5 mm ø



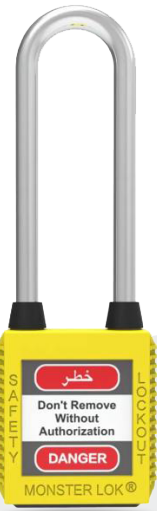
### Stainless Steel Shackle

- LLS540R   ■ LLS540B
- LLS540Y   ■ LLS540N
- LLS540G

### Non-Conductive Nylon Shackle

- LLN540R   ■ LLN540B
- LLN540Y   ■ LLN540N
- LLN540G

## Long Shackle Padlock



- MLL680R   ■ MLL680B
- MLL680Y   ■ MLL680N
- MLL680G

## Cable Padlock



- MLC32R

## Aluminum Padlocks



- MLA633R   ■ MLA633B
- MLA633Y   ■ MLA633N
- MLA633G

## Brass Padlocks

