

LOTO MENA®

Industrial Seals



HEAVY DUTY
&
INDUSTRIAL

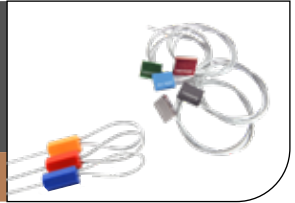
www.lotomena.com

info@lotomena.com

CAR SEALS - Metal Cable Seals

Aluminium Alloy Body, Galvanized Aircraft wire cable, Self-Locking with Unique Serial No. laser engraved on each piece.
Customizable Dia.: 0.8 mm, 1.5 mm, 2.5 mm & 3.5 mm
Customizable Length: 30 cm, 50 cm, 60 cm, 80 cm & 100 cm

Model: LMCS119



METAL SECURITY/SAFETY SEALS

Material: Tinned Steel
Double lock ring for increased safety
Self-locking system is easy
Commonly used in container trucks, box cars, cargo boxes,

Model: LMMS601



PLASTIC SECURITY/SAFETY SEAL

Made of PP+PE, molded at one time, made of 100% plastic for recycling.
Customizable Logo and Permanently laser engraved serial numbers,

Model: LMPS701



METER SEALS

Material: Injection molded from PC+ABS
The seal has a specific logo and is installed outside the electric energy meter, secondary circuit, transformer, power information collection terminal and electric energy metering box to identify the tampering behavior and ensure safety and reliability

Model: LMEMS801

